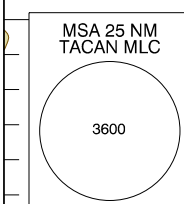
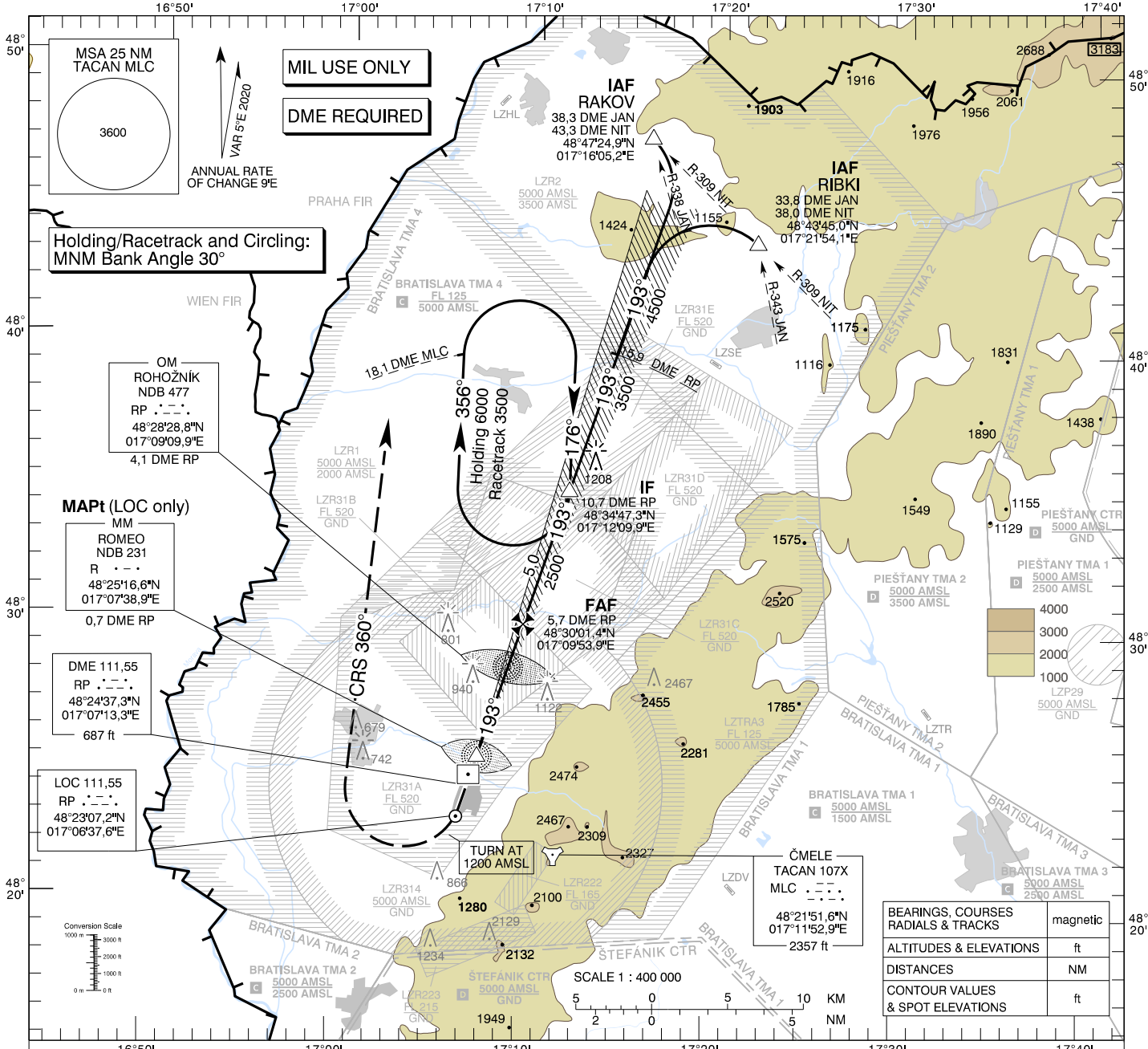


**INSTRUMENT
APPROACH
CHART**

TRANSITION ALTITUDE
10 000 ft
AD ELEV 689 - 25 hPa
THR RWY 19 ELEV 686,4 - 25 hPa

MALACKY RADAR 120,750 (259,625)
MALACKY TOWER 129,575 (120,750)

MALACKY (LZMC)
ILS CAT I or LOC Y RWY 19
HPMA/ACFT CAT E



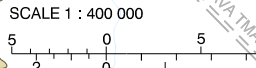
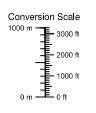
**Holding/Racetrack and Circling:
MNM Bank Angle 30°**

OM
ROHOŽNIK
NDB 477
RP ---
48°28'28,8"N
017°09'09,9"E
4,1 DME RP

MAPt (LOC only)
MM
ROME O
NDB 231
R ---
48°25'16,6"N
017°07'38,9"E
0,7 DME RP

DME 111,55
RP ---
48°24'37,3"N
017°07'13,3"E
687 ft

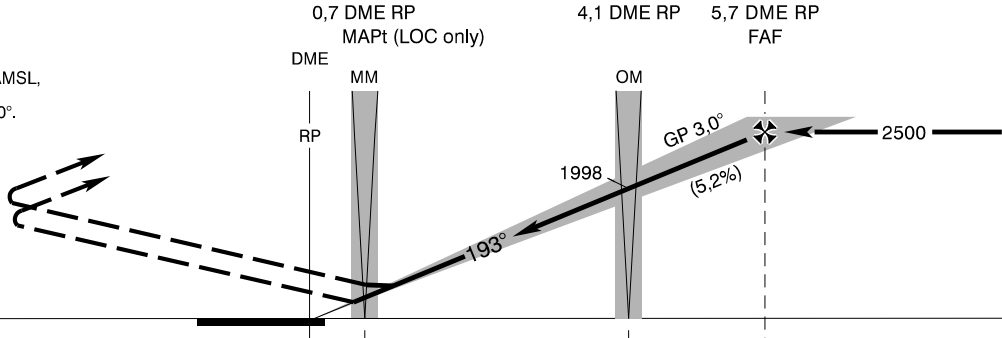
LOC 111,55
RP ---
48°23'07,2"N
017°06'37,6"E



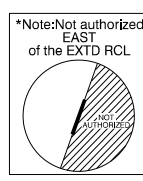
BEARINGS, COURSES RADIALS & TRACKS	magnetic
ALTITUDES & ELEVATIONS	ft
DISTANCES	NM
CONTOUR VALUES & SPOT ELEVATIONS	ft

MISSED APPROACH
Climb STRAIGHT AHEAD, at 1200 AMSL
turn RIGHT to CRS 360°, climbing to 4000 AMSL,
then as directed by RADAR CONTROLLER.
Max IAS 275 kt until established on CRS 360°.
MNM Bank Angle 30°.
No turn before MM.

ILS RDH 56,8
THR RWY 19 ELEV 686,4 - 25 hPa
NM to/from THR RWY 19



OCA (OCH)	ASC	E
Straight-in Approach	CAT I	2,5% ft 927 (241)
	LOC	4,0% ft 919 (233)
Circling (* see Note)		ft 1880 (1191)
VIS		m 6500



DME RP	NM	5,0	4,0	3,0	2,0	1,0
ALTITUDES	ft	2280	1961	1643	1324	1005

Ground speed	kt	70	90	100	120	140	160	180
FAF - MAPt (5,0 NM)	min:sec	4:17	3:20	3:00	2:30	2:09	1:53	1:40
Rate of descent (5,2%)	ft/mIn	372	478	531	637	743	849	955

Timing not authorized for defining the MAPt.

CHANGES: new chart